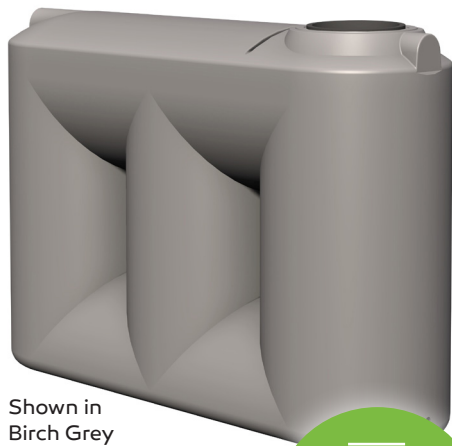


1100 Litre Slimline Water Tank



Shown in Birch Grey

10 YEAR WARRANTY

Built to the highest of Australian standards, this slimline water tank has been designed to be durable, in order to withstand the harsh Australian weather.

The smallest from our slimline water tank range, this unit will provide adequate water storage using only a small amount of space.

- Built to last, using UV stabilised food grade polyethylene. BPA free.
- One-piece cylindrical construction that ensures 'hoop' strength and stability.
- Complies with AS/NZS 4766 standard for above ground tanks.

Specifications

Width: 640 mm

Length: 2030 mm

Height: 1200 mm

Available colours:



Please note: Printer and monitor variables may impact the variability of colour displayed.

Product Code: PTS1100 (+ Colour)

nextgenroto.com.au